

# APARTMENT

## LUXEMBOURG-MUHLENBACH

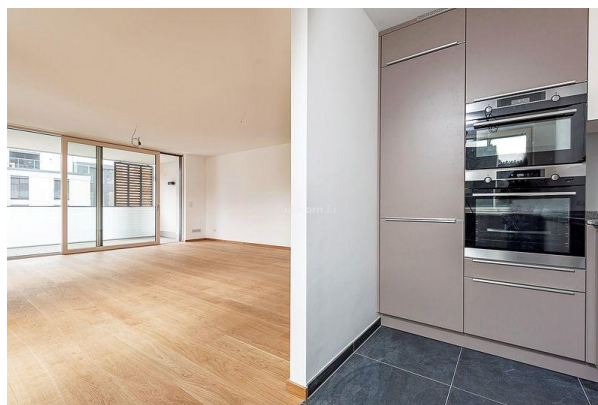
REF. 9297

**2 700 €**

Monthly charges : 360€

2 bedrooms

99m<sup>2</sup> Surface (m<sup>2</sup>)



In the residential area of Luxembourg-Mühlenbach, at the border of Limpertsberg, your Unicorn real estate agency proposes you to rent this superb crossing apartment.

With a surface of 99m<sup>2</sup>, this functional and well arranged apartment offers you a spacious and sunny living space. The perfectly equipped kitchen is open on the living room of more than 34m, this one gives you access to a beautiful terrace of 16m<sup>2</sup>.

The night space of the apartment, consists of two bedrooms, a shower room and a bathroom with double sink and bathtub.

Ideally located at less than 10 minutes from the city center of Luxembourg, this apartment will not miss assets to seduce you.

This property is completed by a cellar and a parking space.

Availability to be agreed from 23 March 2026.

Rental terms:

- Deposit: 2 months' rent
- Month's rent payable in advance
- Agency commission of one month's rent + 17% VAT, to be shared between lessee and lessor.

<https://www.new.unicorn.lu/en/detail-9297-location-appartement-luxembourg-muhlenbach>



18, rue du Marché-aux-Herbes  
L-1728 Luxembourg  
Grand Duché du Luxembourg

T. +352 26 54 17 17  
T. +352 26 53 25 36

info@unicorn.lu  
www.unicorn.lu